

Microsoft Windows TM Compatible - SitePROEV fully Windows compatible and may be minimized while running other applications. If an alarm occurs while SitePRO is minimized, it will automatically pop up to display the alarm condition.

Real Time Monitoring - SitePROEV continuously scans the field controllers for the latest information and alarms. Should a fault occur, the operator is immediately notified.

Analog and Digital Status - The latest status of the monitored and controlled systems is displayed in easy-to-read language.

High Resolution Graphics - The graphic window allows any BMP file to be displayed in full color. Floor plans and diagrams can be displayed to illustrate the data center, electrical, or hydraulic flow charts.

Dynamically Updated Graphics - Analog and digital icons can be placed on the graphics to indicate operational conditions.

Mouse Operated - SitePROEV is fully mouse operated for easy control.

Simple Setup - The term "Plug and Play" is a good description of the simple setup of SitePROEV. Simply click on the configuration option, select a unit number and type, and give it a unique name.

Simple Unit Programming - Like setup, simply click on set points and use the mouse to change temperature control points or time zones.

Help Messages for Alarms - Program individual and unique alarm messages for important alarms to the system. The message could instruct someone on the necessary action to prevent further damage.

Voice and Image Help - Scanned images or graphics may be incorporated into the help message to further aid in diagnosis and repair. Customer recorded voice messages may also be associated with specific Alarms.

Automatic Dialout - When an alarm is present anywhere in the system, SitePROEV can call out through a modem to relay the alarm information. The information can be automatically sent to a digital pager, another PC, a serial printer, etc. SitePROEV may also send voice messages, e.g. to a field technician's phone.

Automatic Email Server - When an alarm is present anywhere in the system, SitePROEV can automatically send email to predefined users via your intranet or the internet with the optional Web-Servers software.

Web Server - Use MS Internet Explorer or Netscape Navigator to check your system from any network terminal with the optional Web-Server software at the main SitePRO PC.

History Files - While SitePROEV is running, it is saving status and Alarm information to the history file. The data can be retrieved and displayed with a mouse click or exported to programs such as Excel, or Dbase.

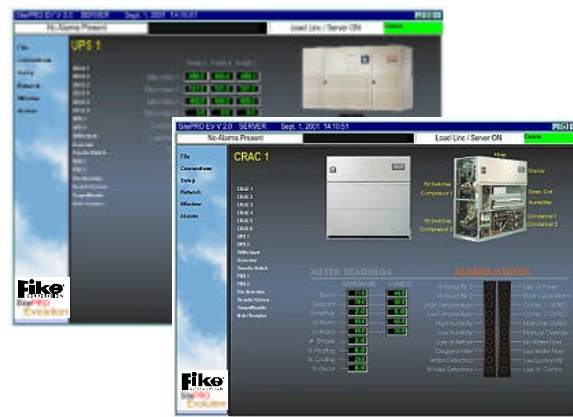
Remote Diagnostics - Using a 56.6 Kbaud modem on the monitoring PC, Darwell can remotely run and diagnose the SitePROEV system. This allows for easier (and cheaper) maintenance support.



Total Graphic Solution

SitePRO, MiCore and our iT touchscreen computers offer a complete and total solution for graphic monitoring of modern addressable fire systems. Multiple graphics let the customer zoom into an location for maximum detail.

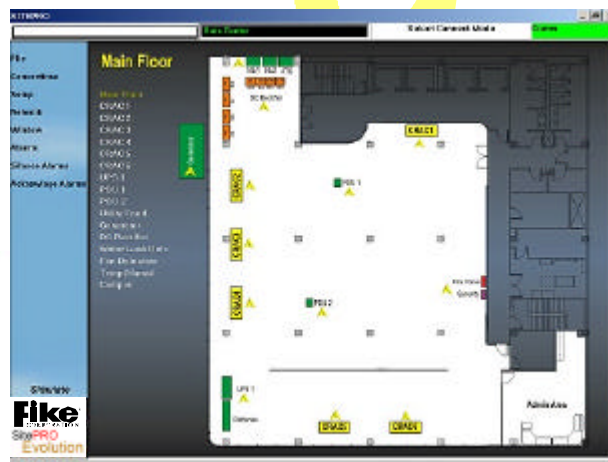
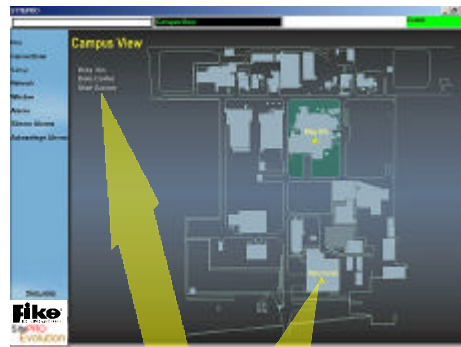
Simple to upgrade the floor plans as the facility changes. Never have to settle for outdated static graphic panels again.



Graphic Displays



Active Alarm and Current Event Windows



Navigating the Graphics

Double clicking the flashing icon moves the operator to the building floor plan for more detail. Or select the building from the Dynamic Link List like using a programable hypertext.

MiCore Plug Interfaces

Fike Intellascan II

Fike Cheetah

Fike Shark

Fenwal 1000, 2000 and 4000

FCI 7200

Notifier 2020

Firelite MS9200

Radionics Security Panels

Liebert System 3 Air Units

Liebert Power Distribution Units

Liebert Series 600 UPS

Airflow Air Units w/Dataguard 3, 4 and 5

MGE Series 6000 and 3000 UPS

MGE Comet and Galaxy UPS

Chloride UPS

APC Power UPS

BEST Power UPS

Powerware and Powerware Plus UPS

Square D Power Logic

Square D PLC

Caterpillar Generators

Many Others...

Other Compatible Products

Information Gathering Units WEB

Universal Input Boards

Pmon

GENCon

PC Requirements

Pentium III 1.0GHz Processor (Min)

512K Cache

Windows 98, Me, XTP or NT

128 Meg Memory

20 Gig Hard Drive

Internal CD Rom

3.5" Floppy Drive

16 Meg Graphic Adapter

Sound Card

Two Serial Ports

One Printer Port

56K Modem

10 Base T Ethernet Card

Enhanced Keyboard

Two Button Mouse

15" Flat Screen LCD Monitor

Two Remote Speakers

One Dynamic Microphone

Optional Equipment

120 Meg Zip Drive

CD-RW Internal Drive

HP Color Desk Jet or Laser Printer

1.2KVA UPS



704 S. 10th Street

Blue Springs, MO 64015

Phone 816-229-3405

Fax 816-229-0314

E-mail fpssales@fike.com

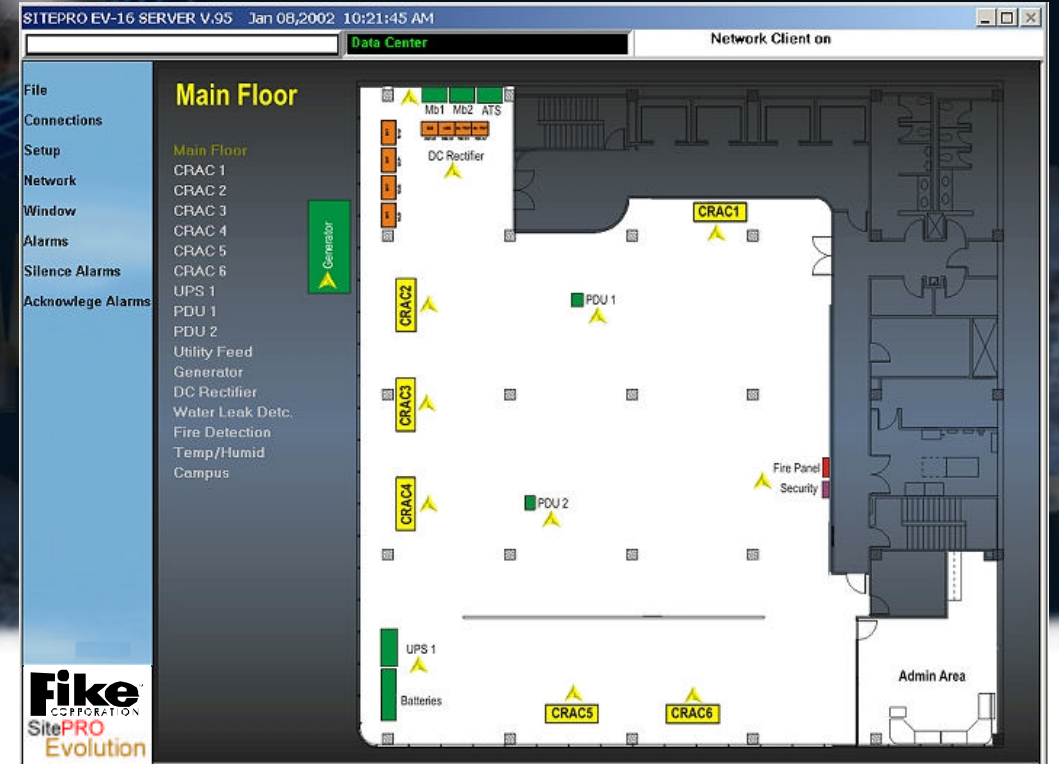
www.fike.com



SitePRO EV
Change
is inevitable...

Only the Best
Evolve

- TrueColor Graphics
- Dynamic LinkIcons
- Windows Compatible
- Direct Data Exchange
- High Speed Monitoring
- Dynamic Graphic Link List
- Active Alarm Window
- Current Events Window
- Simple Programming
- Auto Emailing
- Auto Page
- Web Enabled
- SQL Data Bases
- Dynamic Analog Windows
- Custom Point Help Messages
- Custom Voice Help Messages
- Individual Point Graphic Images
- Site Log Book
- Remote Operator Log-in
- Alarm History Query
- Analog Data Query
- Automatic HTML Page Generation
- Multilevel Security
- TCP-IP Compatible
- Easy Networking
- Remote Dial-in Support
- Backward Compatible
- Much More...



Darwell's SitePRO Evolution software is the latest version of our Windows based graphic monitoring system. As requirements have increased over the last 15 years, SitePRO has evolved to meet the demands of high tech facility monitoring. SitePRO-EV reflects that experience and growth in its strong feature-based design. SitePRO isn't a big building automation system trying to cover the requirements of a modern technology facility. SitePRO is designed specifically to meet the needs of today's technology centers.

SitePRO-EV is the only system that is designed to grow with you as your business needs change. Whether it is a small technology closet, data center or a multi-building enterprise scattered across the country, SitePRO will be there to protect your business.

Our powerful color graphics, simple navigation and updated features provide the best solution for your needs in graphic monitoring of addressable fire detection and suppression systems, at a cost that fits your budget.

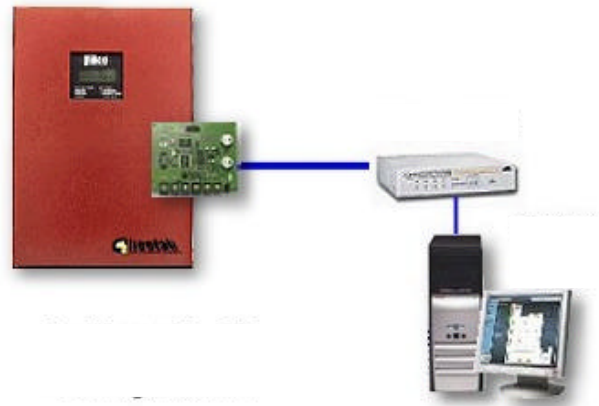


Direct Connection

MiCore communication interface receives alarm and status information from the addressable fire detection system and converts the data protocol from its original proprietary format to a single common language.

Darwell's SitePRO graphic monitoring system can then provide complete and simultaneous monitoring of all the alarm, status, trouble and missing events from virtually all equipment, regardless of manufacturer, with a single monitoring system. This results in increased monitoring and control capabilities and decreased hardware quantities and costs.

Each MiCore is equipped with specialized firmware uniquely designed for the specific brand and model of equipment being monitored. The two-way communications capability permits both receipt of alarm events and silence, reset and acknowledge via the MiCore and SitePRO where allowed.



LAN Application

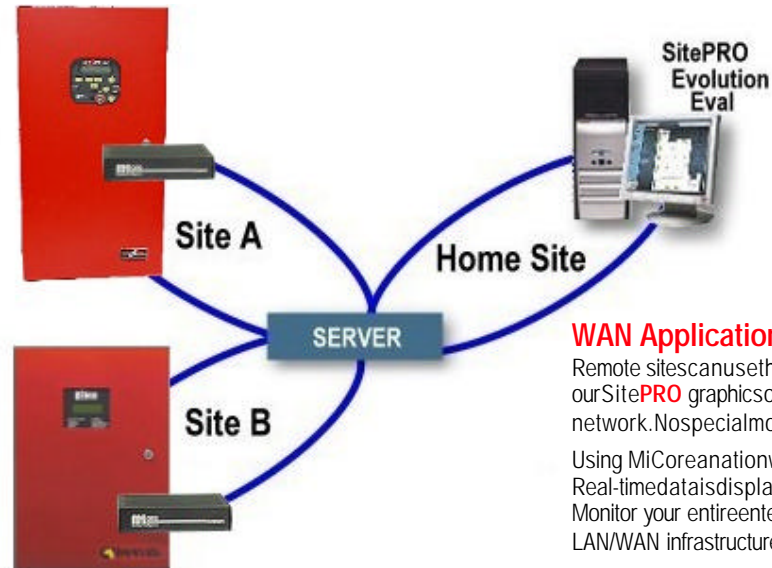
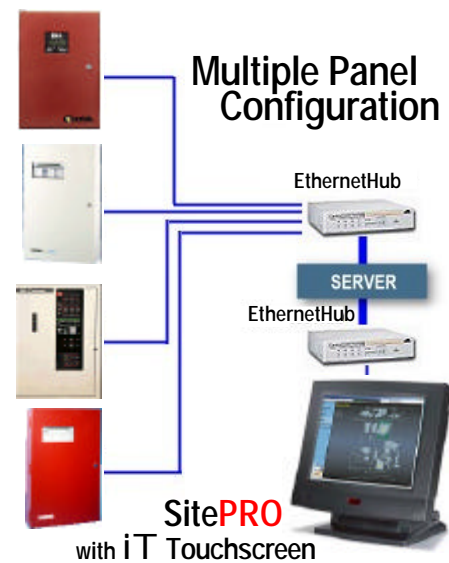
MiCore can be used in a dedicated LAN network or on the customer's existing LAN. This provides the flexibility to choose the best method for the customer's needs. (Static IP addresses required)

LAN Multi-Panel Application

Many facilities have multiple fire panels installed. Some with different manufacturers. Using MiCore multiple panels can be networked using the existing LAN infrastructure. When more than one manufacturer is present, simply select the proper MiCore for each panel. The display at SitePRO will work for all the addressable fire systems in the customer facilities.

No costly dial-up telephoned lines or modems are needed. No dedicated phone lines. No proprietary LAN networks and equipment to purchase. No special servers and interface agents to coordinate.

MiCore does it all in one small efficient system.



WAN Application

Remote sites can use the built-in FTP feature to send "real-time" information to our SitePRO graphic software from anywhere on the customer's LAN/WAN network. No special modems or expensive wiring needed.

Using MiCore on a nationwide or worldwide network is easy to set up and operate. Real-time data is displayed continuously on the SitePRO Evolution windows. Monitor your entire enterprise from one location or several with the existing LAN/WAN infrastructure.



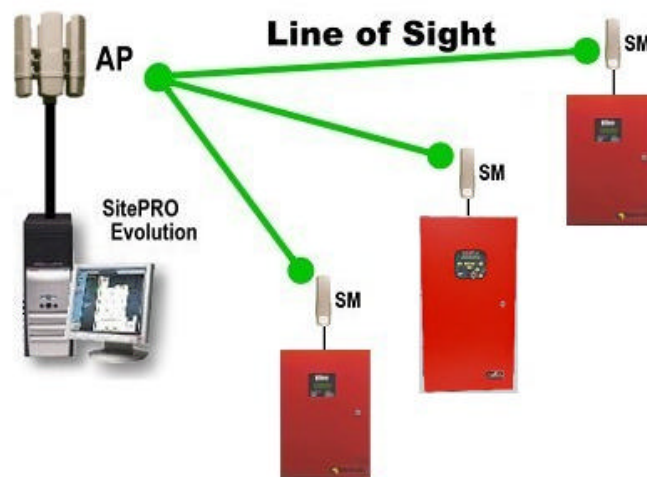
Wireless Networking

The Darwells' MiCore nodes make networking your campus critical fire system easy. Now Motorola makes it easy to bring it all together.

MiCore easily and cost-effectively traps all the alarm and status information from the addressable fire panels. Motorola Canopy provides a simple and cost-saving method of bringing all that information back to the monitoring station.

Low cost and simple to install with a range of up to two miles there is no reason to hard wire the campus for high-speed networking.

No FCC site license is required to use Canopy. Making it even easier to use.



Automatic Emails

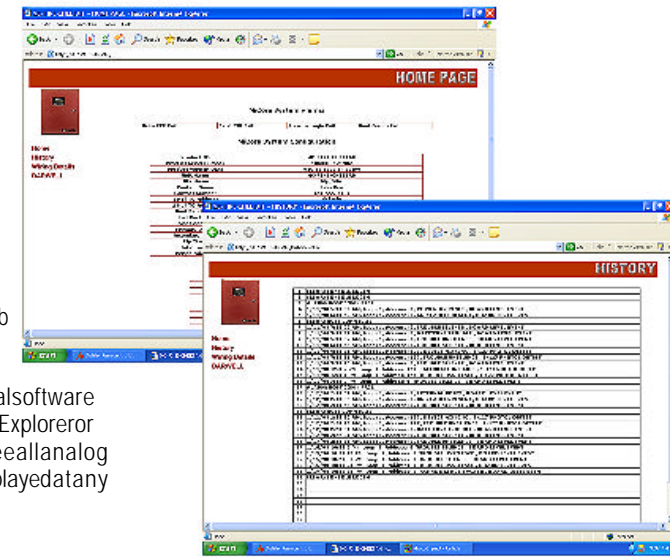
MiCore can be programmed to automatically email alarms from the host equipment anywhere in the world. Alarms delivered right to the PC of those responsible for support. Immediate and 24 hours a day.



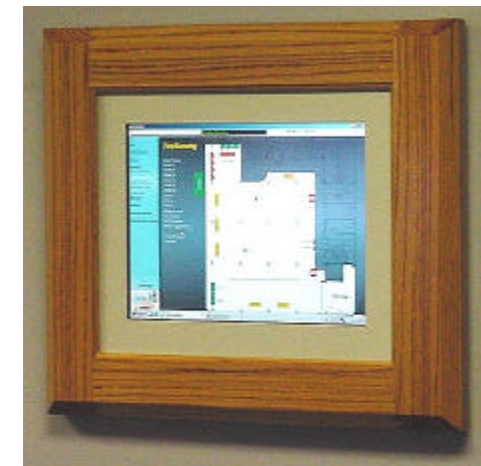
Even email the alarms directly to your pager. Never be out of touch with your facility.

Web Page Hosting

MiCore gathers all the information from the host equipment and places it in a way that is easy to understand on web pages. All alarms, troubles, etc. are displayed in the web pages. No special software needed, Microsoft Internet Explorer or Netscape can be used to see all analog and alarm information. Displayed at any PC on the network.



iT TouchScreen Computer Terminals



Our iT TouchScreen is a fully integrated Pentium III computer with high resolution LCD display and touchscreen control.

Darwell offers three versions of our iT TouchScreen PC. Each is fully integrated into the housing package for wall, desk or kiosk mounting. No cords and cables to worry about or clutter up the desktop. The wall mounted iT is thin enough to fit in standard wall cavities.

Once programmed the only thing needed to operate an iT computer is a finger or pointer. You can navigate the graphic floor plans, silence alarms, acknowledge alarm, even make setpoint adjustments without a keyboard or mouse.

N Site Off Site Monitoring for Critical Systems



N Site is a service providing 24/7 live monitoring of alarm events from your site. Professional dispatchers immediately handle all alarms from your locations and insure the right people are notified to prevent system outages.

N Site can be used as a primary or backup for the monitoring of your critical systems such as utility power, UPS systems, air units, generators, fire systems and security alarms. N Site is designed for use in very small sites and very large sites.

N Site puts "live", trained personnel overseeing your critical systems. Not relying only on dial out pagers or E-mails for alarm notification, that sometimes are turned off.

N site dispatchers use your database information to contact the personnel you choose to respond.

