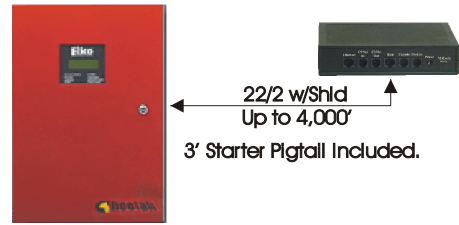


Why Use SitePRO-MiCore for Graphic Monitoring of Fike Addressable Fire Systems

The combination of SitePRO graphic monitoring software and MiCore intelligent interfaces makes a powerful tool for high speed real-time monitoring of critical fire detection and suppression systems. High-resolution color graphics, programmable floor plans, programmable alarm sounds, automatic graphic switching, automatic emails and HTML web pages simply place this solution above any other.

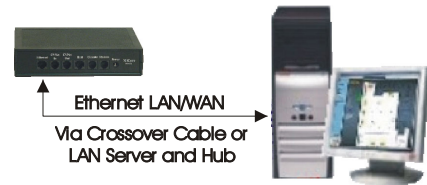
How MiCore Connects to Fike Panels

The MiCore intelligent interface connects to the Fike addressable fire panel (Cheetah, Shark or Intelliscan) using the RS485 port or RS232 port depending on the model. Once MiCore is connected it receives all the alarm and trouble information directly from the panel. No additional interfaces or wiring required. Cable pigtails are included with MiCore to make the connection easy.



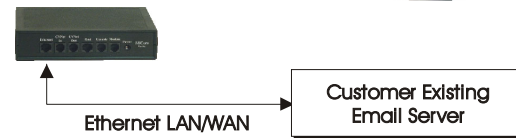
How MiCore Connects to the PC

MiCore connects to the graphic monitoring PC via Ethernet. The Ethernet LAN can be a dedicated LAN or use the customers existing LAN network. When a dedicated LAN is used a simple "cross over cable" can connect the fire panel to the PC's Ethernet port.



Automatic Email

MiCore stores two email addresses. When an alarm or trouble is present at the Fike panel MiCore will automatically send the alarm events to the programmed email addresses.



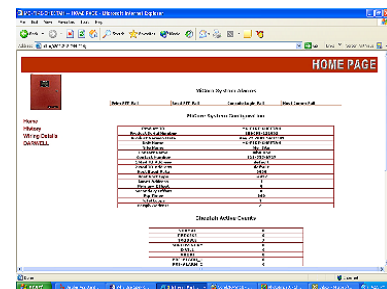
Can it page me?

Most pagers today have an associated email address such as "9725551234@pagenet.net". Use the email address of your pager as one of the programmed emails in MiCore. When an alarm event is present you will be paged automatically.



HTML Web Pages

MiCore automatically builds it's own web pages to display a wide range of information from the Fike panel. All alarms and troubles are displayed including the specific address of the detector or monitor module. MiCore knows exactly which address has the alarm or trouble and makes it easy to view it. No special software is needed, just use your Internet Explorer or Netscape Navigator, log-on to MiCore and use the simple menu driven pages.



Is there any remote control?

MiCore will allow the operator to remotely silence, acknowledge and reset the Fike panel with the proper password. Use Explorer or Netscape to log-on to MiCore then select the reset options on the web page.



I've always used static graphic panels.

Yes, but like saying I always send letters by mail when fax machines hit the market, it's time to rethink what you've always done. Many times when a static graphic panel is ordered and approved the building is one way. When it arrives six weeks later the walls have changed. Now the customer either accepts an obsolete graphic, demands the fire contractor "fixes" it at the contractors expense or a new panel is about to be ordered.

With MiCore and SitePRO a new floor plan can be updated and loaded into the monitoring PC in a matter of an hour or so. The customer is always up to date and the cost is minimal. Now you have a great feature to add to your service contract. The customer is happy, you're happy, that's customer service.

How can I monitor a remote fire panel?

MiCore connects to the remote fire panel. Then Ethernet LAN/WAN between the remote building and the monitoring site is used to bring the real-time information directly to the monitoring PC. No extra cost for modems or the expense of monthly phone lines (2 would be required) or the expense of dedicated phone lines.



Can the customer use his own PC or must he buy one from Darwell.

Our software is designed to operate on any MS Windows 98, ME, NT or XP platform. The customer can use his own PC. SitePRO is easy to install and connect to the MiCore via LAN. We'll be happy to send the PC requirements.

Feature Comparison with Static Graphic Panels

Feature	MiCore/SitePRO Eval (Free)	MiCore/SitePRO Full Version	Static Graphic Panel
Number of Graphics	10	400	1
Number of Full Color Graphics	10	400	0
Alarm Icons per Graphic	400	400	Optional, depends on size and price.
Types of Alarm Icons	25	25	1 (Led)
Programmable Alarm Sounds	Yes	Yes	No
Password Protection	Yes	Yes	No
Alarm and Trouble Indication	Yes	Yes	Optional
Alarm and Trouble History	Yes	Yes	No
Easily Updated Graphics	Yes	Yes	No
Easily Add or Delete Detectors	Yes	Yes	No
Zoom to higher detail.	Yes	Yes	No
Host Web Pages	Yes	Yes	No
Automatic Emailing	Yes	Yes	No
Estimated End-User Cost	\$2,500.00	\$ 5,000.00	\$ 4,000 - \$ 5,000

****Estimated cost comparison all cost are estimates only and do not necessarily reflect actual cost.****

Cost Comparisons with Other Graphic Monitoring Systems

SitePro-EVe included with all versions	Cost to End-User	CadGraphics 1000	Notifier UniNet	Siemens
Micore using customer PC	\$ 2.5K	\$ 15K	\$ 17K	\$18K – \$24K
MiCore with standard PC	\$ 5.0K	\$ 15K	\$ 17K	\$18K – \$24K
MiCore with Touchscreen PC	\$ 7.5K	\$ 19K	\$ 21K	\$18K – \$24K

****Estimated cost comparison all cost are estimates only and do not necessarily reflect actual cost.****

Final Points

- MiCore and SitePRO offer an exciting opportunity to offer your customers cutting edge technology that still fits in their construction budget.
- This combination is perfect for new or existing customers.
- Showing this new way to monitor your customers fire equipment gives you an excellent reason to see your existing customer again.
- Use one of the email addresses in MiCore to send emails directly to your office for alarms at your maintenance contracts.
- Specifications work. Get MiCore/SitePRO specified with the engineers in your area and watch the competition price themselves out of the job.

This new system offering from Fike is a win-win for you and your customers. Take the time to compare systems, features and costs; there simply isn't anything like it available. Web enabled Fike fire panels, automatic email notification on alarms and troubles, full color graphic monitoring, remote system monitoring on existing Ethernet LAN. Now is the time to use this new sales tool to increase profits and give your customers the next generation of high end graphic monitoring.